

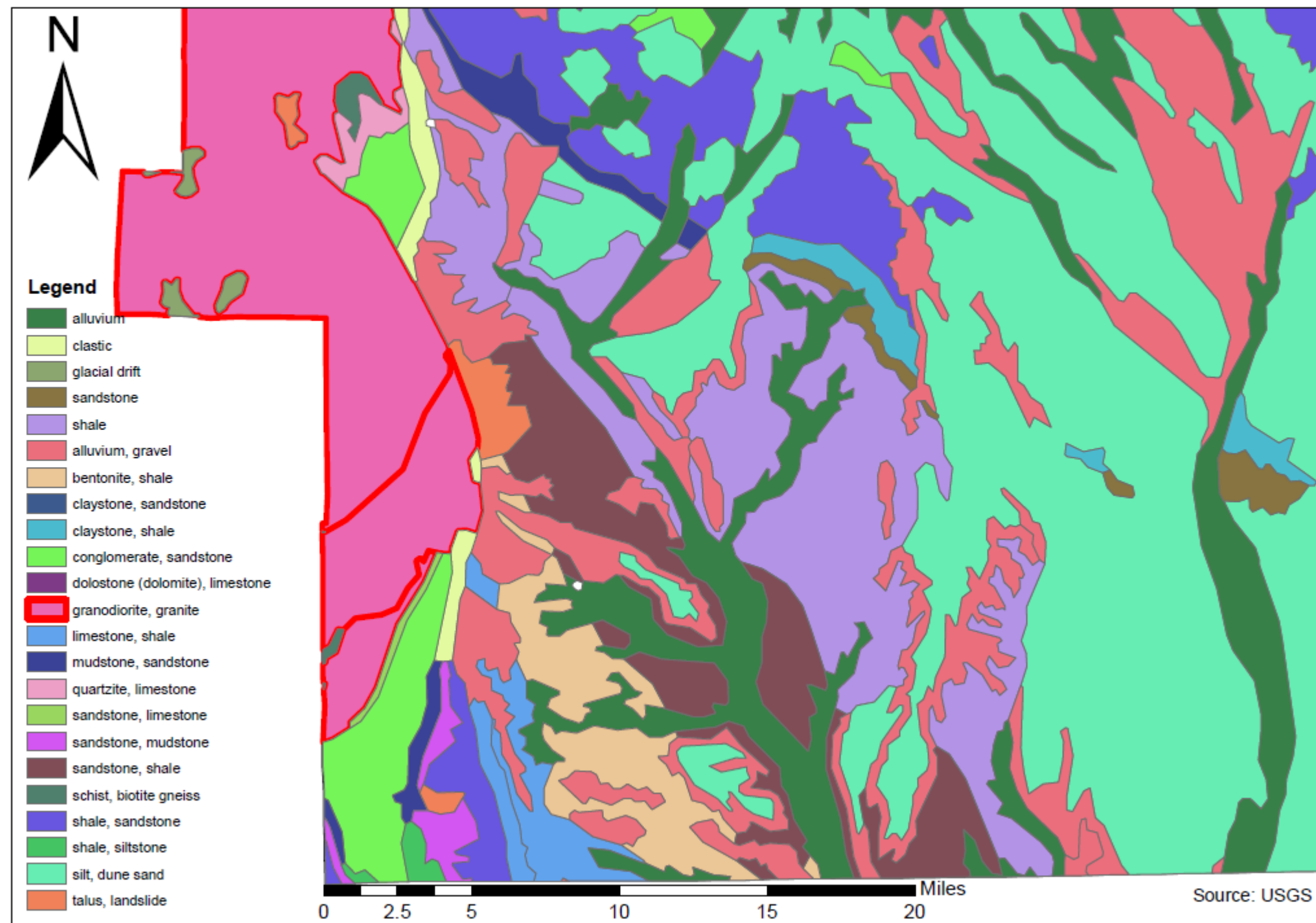
# Radon Risk Assessment for El Paso County

Lorenzo Young  
GES 4080 Advanced GIS

## Abstract

Decomposing granite creates a health concern for residents in El Paso County, Colorado. Individuals most at risk are children and Elderly. This project aim to assess if there is a significant risk to those individuals

## Geology Of El Paso County



Exposed Granite Outlined in Red

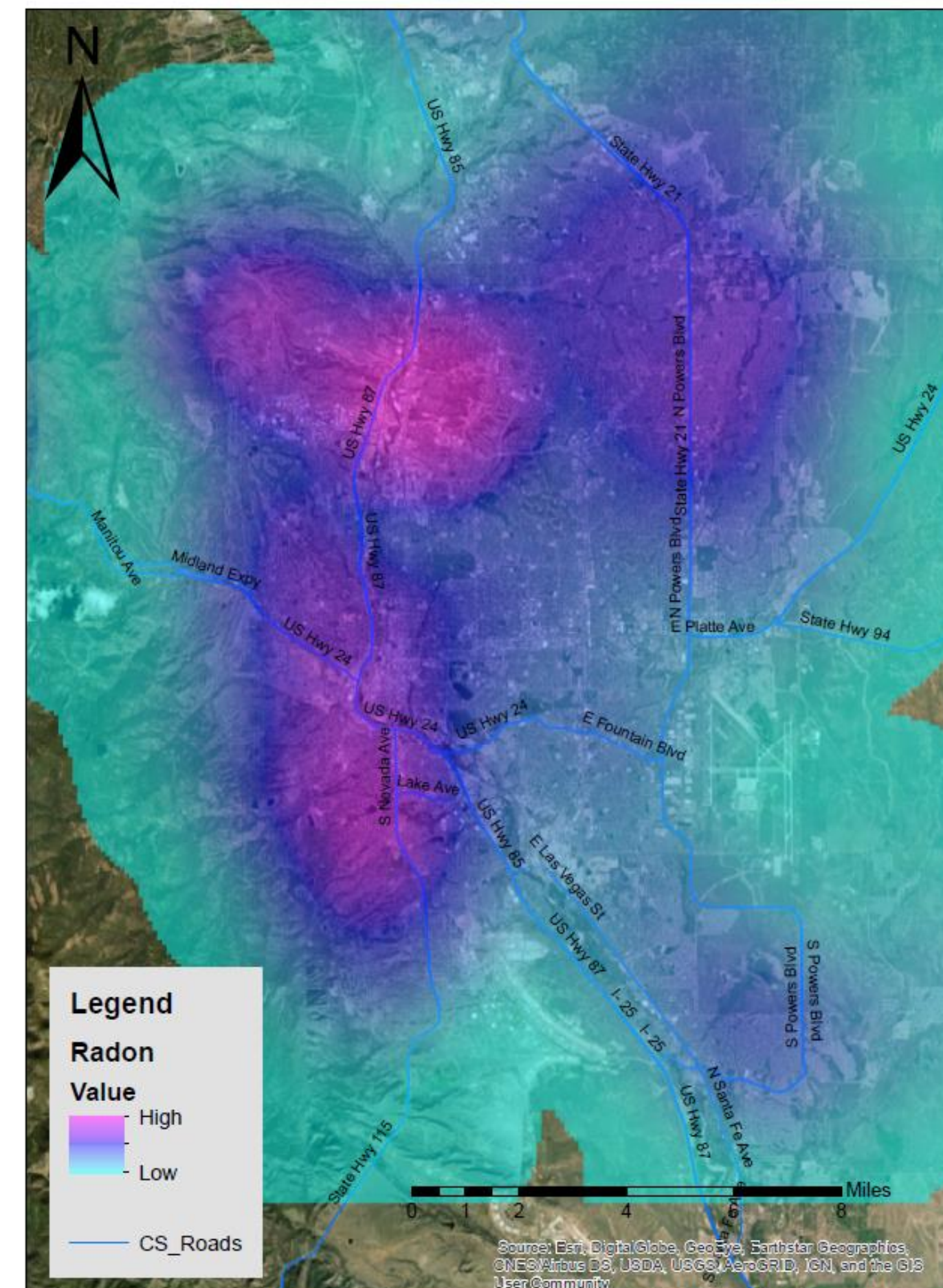
## Introduction

According to the El Paso County Public Health "Radon is an invisible, odorless, tasteless, radioactive gas. It comes from the natural breakdown of uranium found in soils, rock, and water. Because radon is odorless and invisible, the only way to know if your home has a radon problem is to test. Radon seeps through the soil and moves into the air and into homes through cracks and small openings in foundations. Homes trap radon in living spaces, where it may build up to dangerous levels". The dangers of radon are numerous and can compound with other forms airborne contaminants.

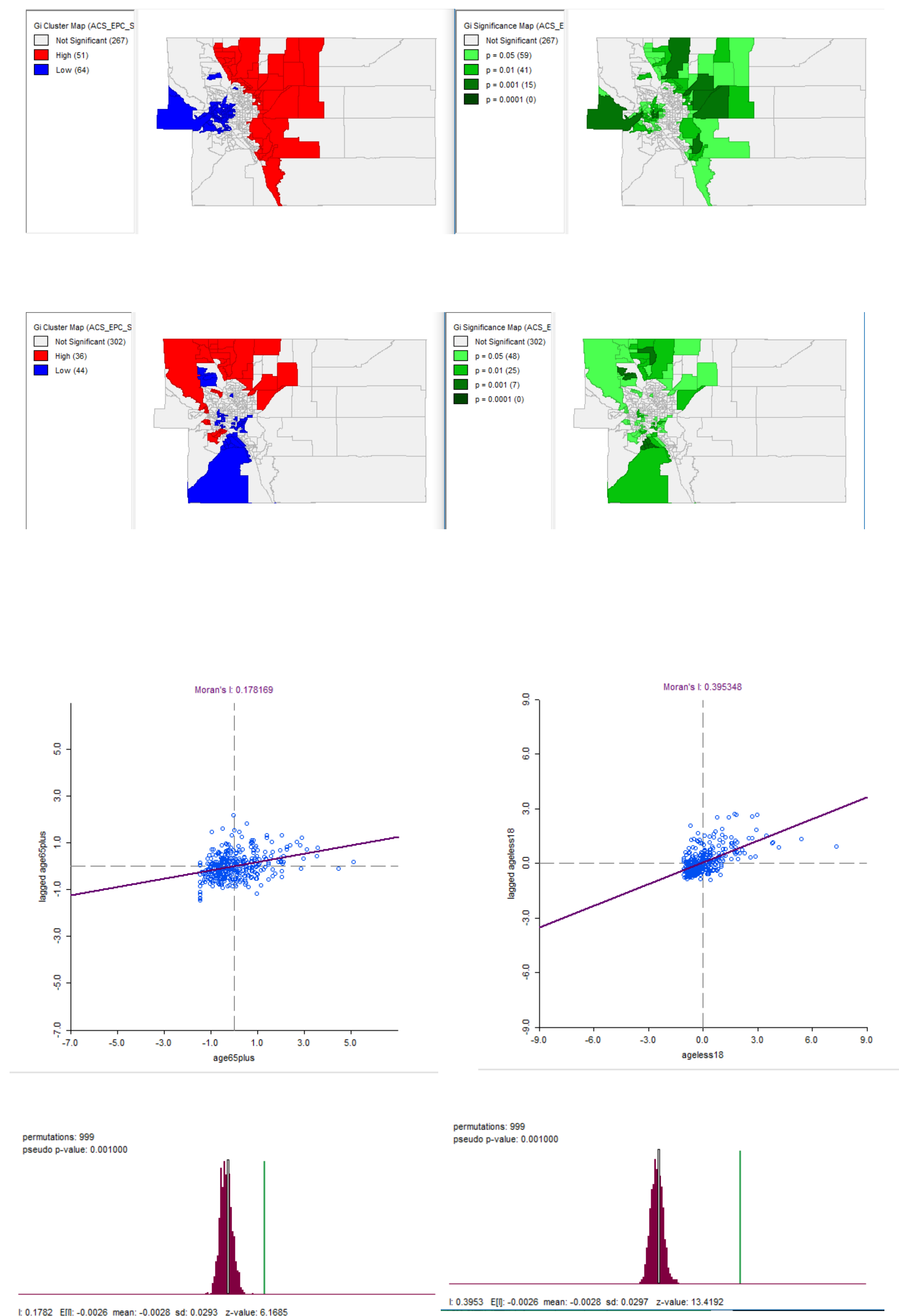
## Methods and Materials

- Kernel Density was used to show the density of individual readings obtained from the UCCS Radon Lab
- Statistical Analysis was done with GeoDa using Moran I for interpretation of P-value to determine significance

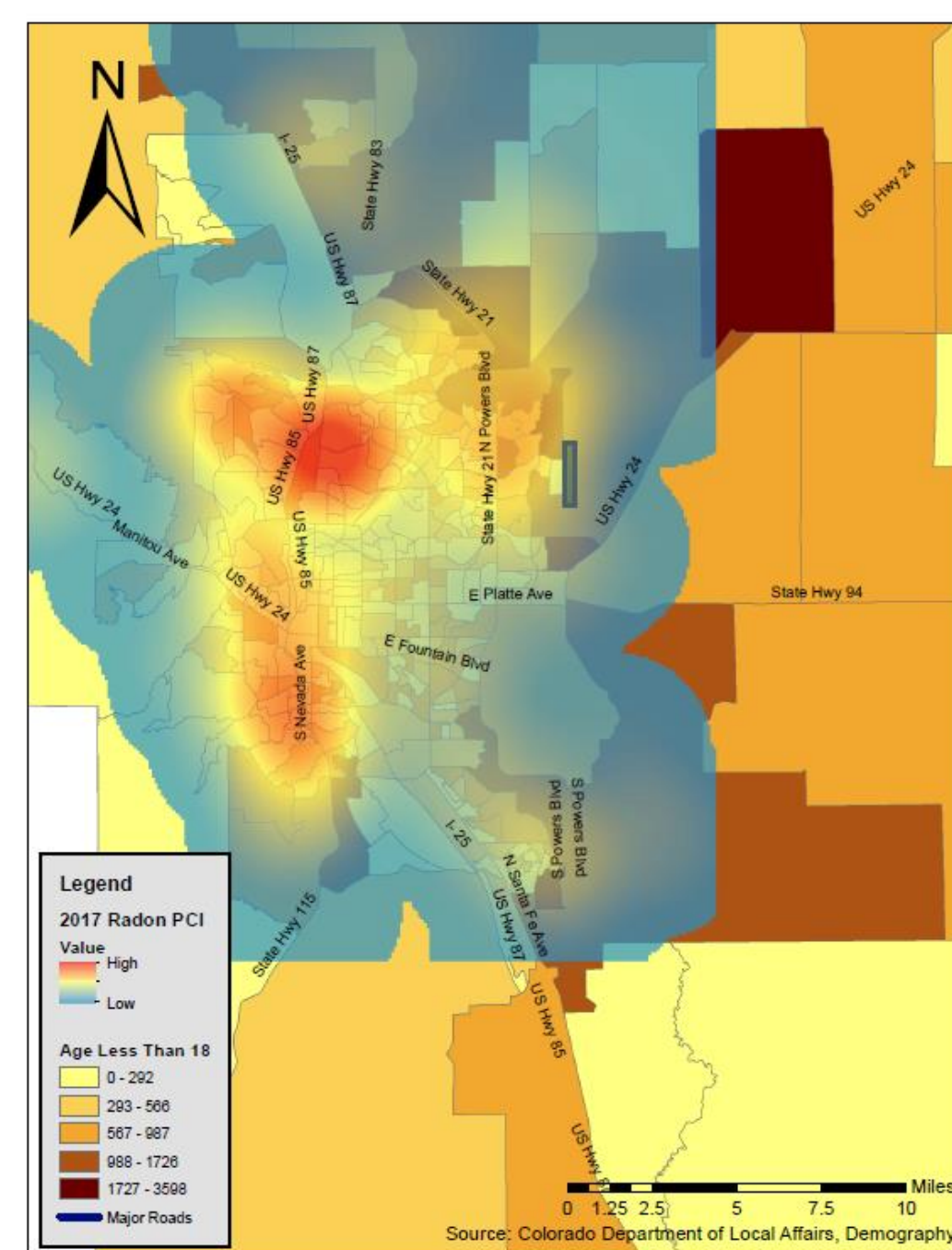
## Radon Density in El Paso County



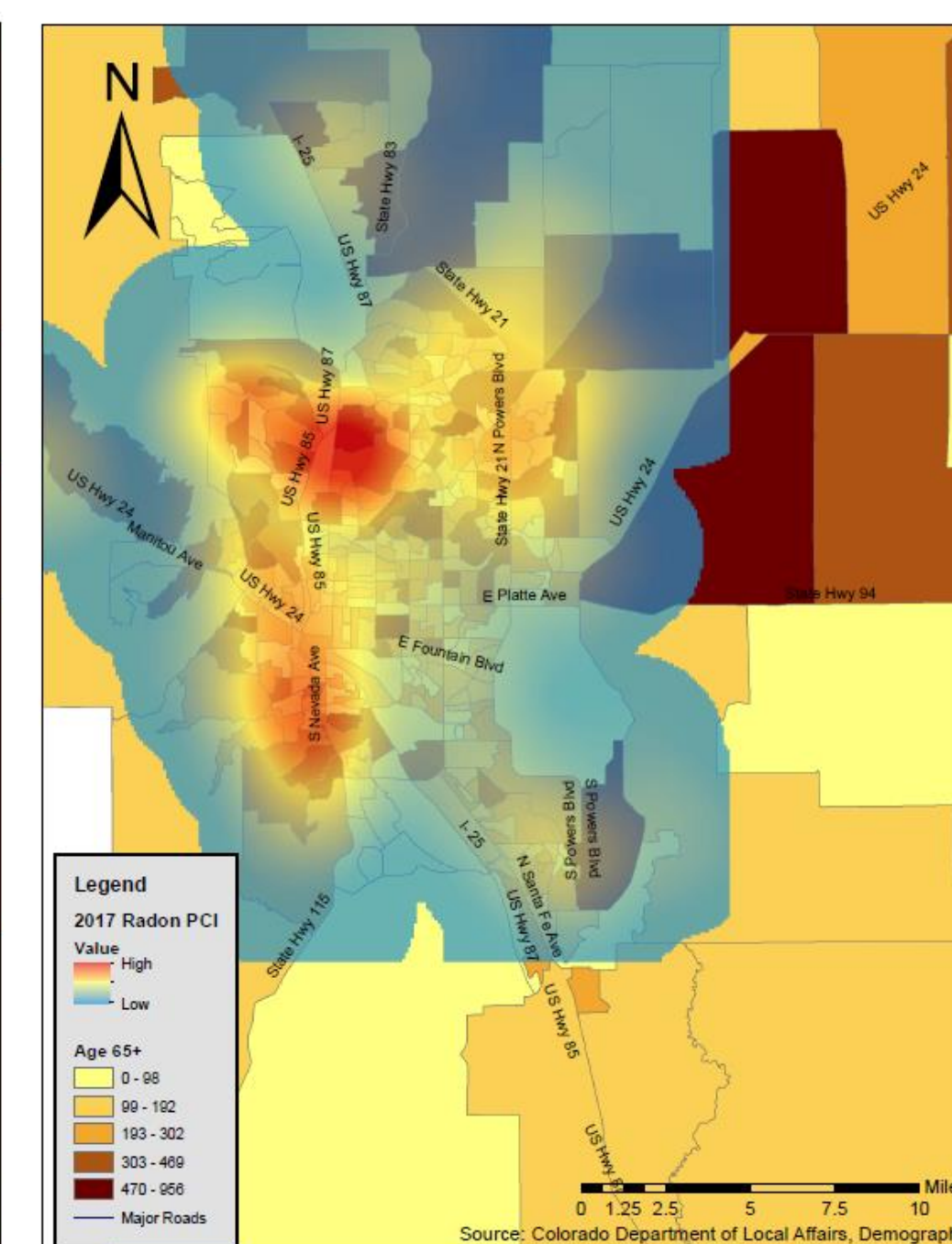
## Results



## El Paso County Age Demographic



## El Paso County Age Demographic



## Conclusions

Analysis show areas which have more concentrated levels which can be used as a precursor to show where these higher levels exist along with at risk individuals.

Limitations of this data were the locations where data was collected, and not random samples. Data was aggregated to means at block group levels for statistical purposes

## References

<https://www.elpasocountyhealth.org/services/radon>

